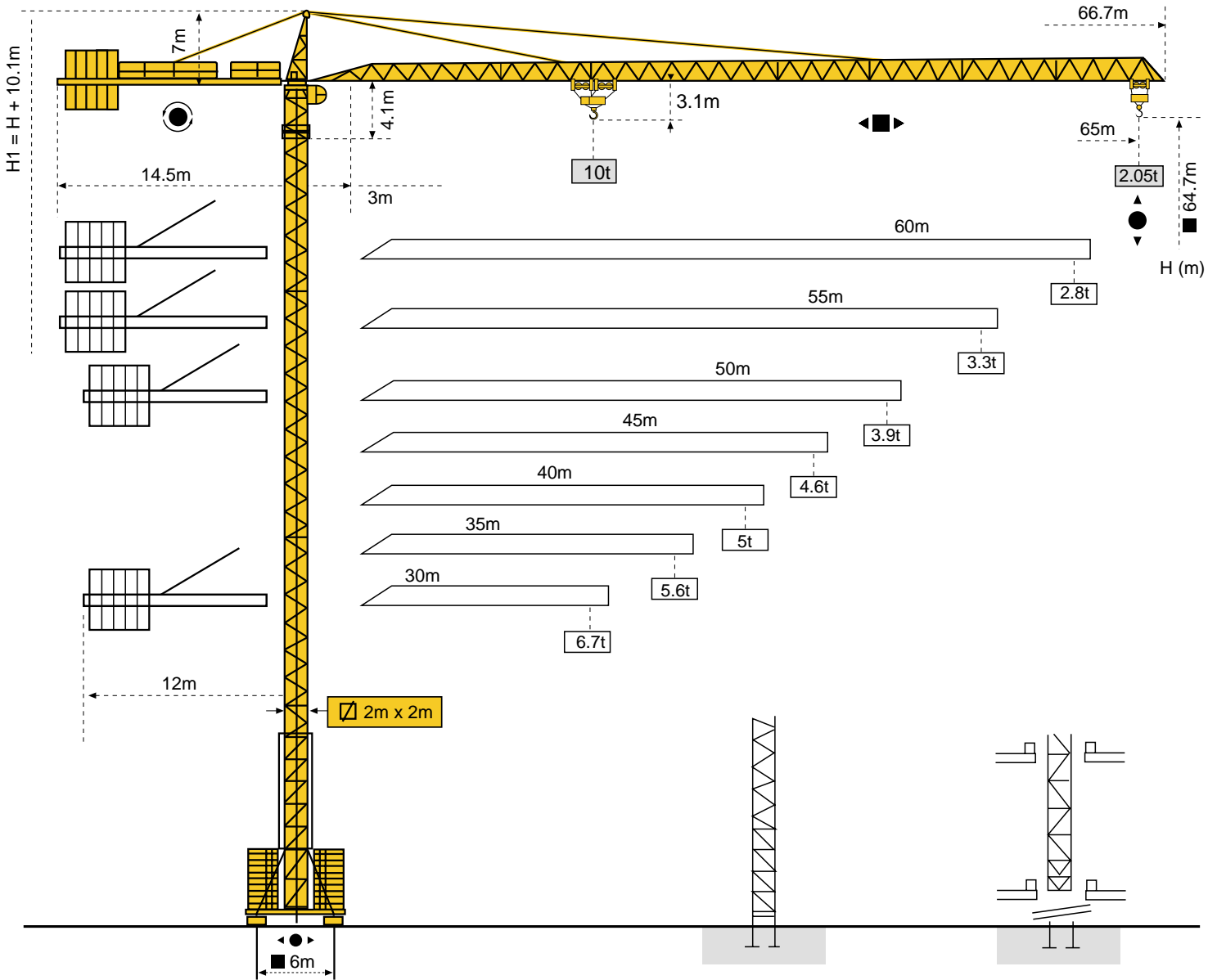


MC 235B



Masts / Reactions

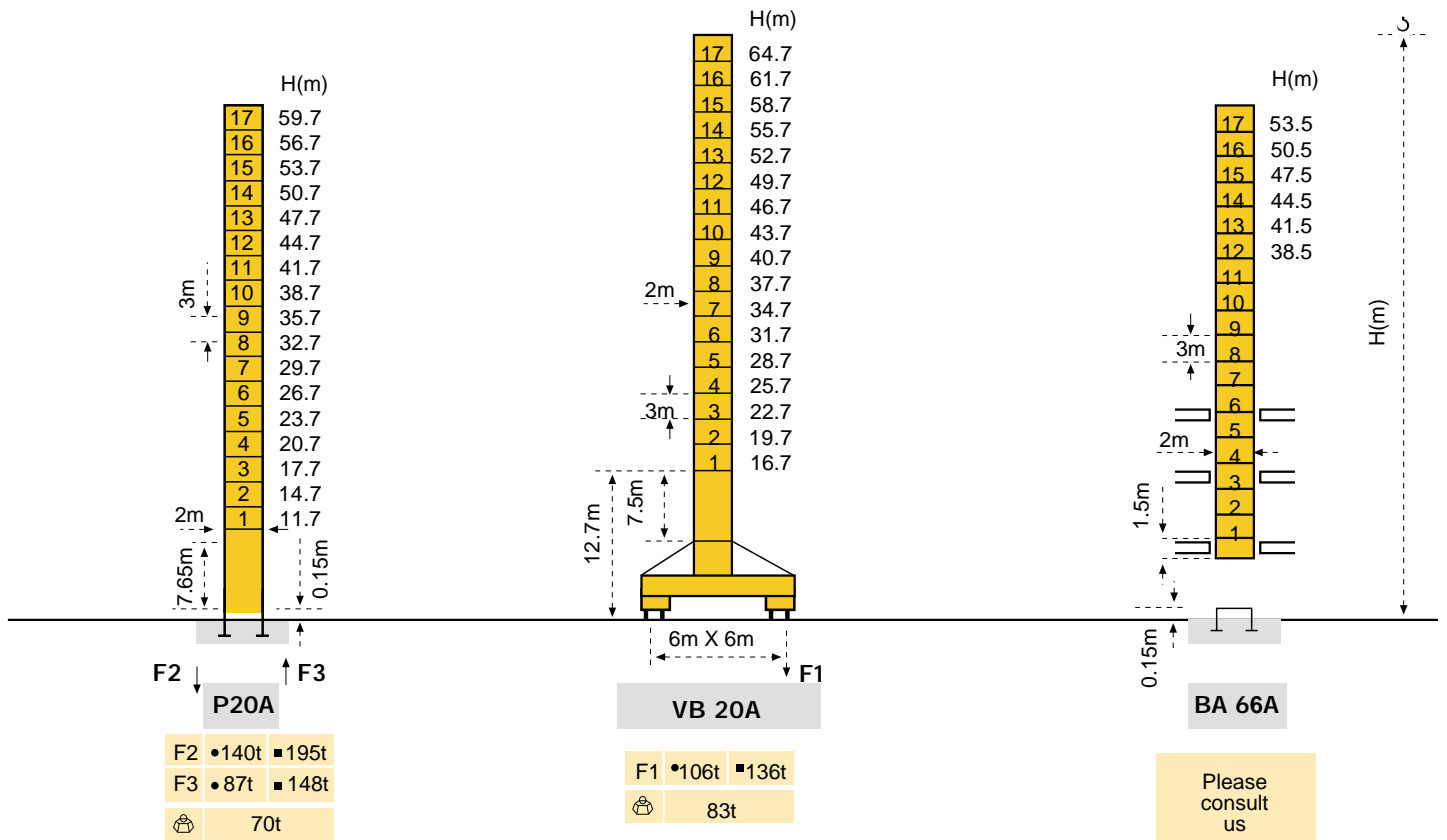
Masts



2m

Jib

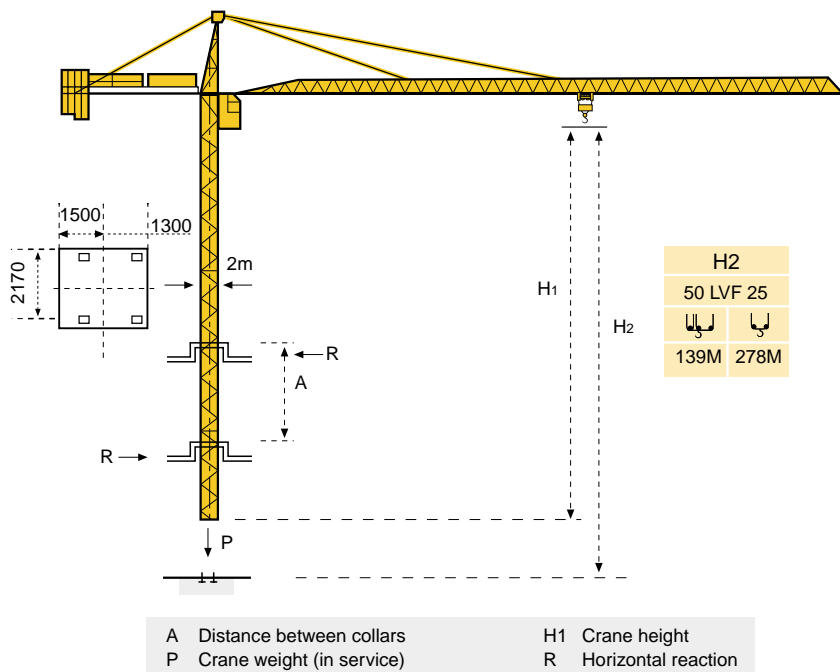
30m \Rightarrow 65m



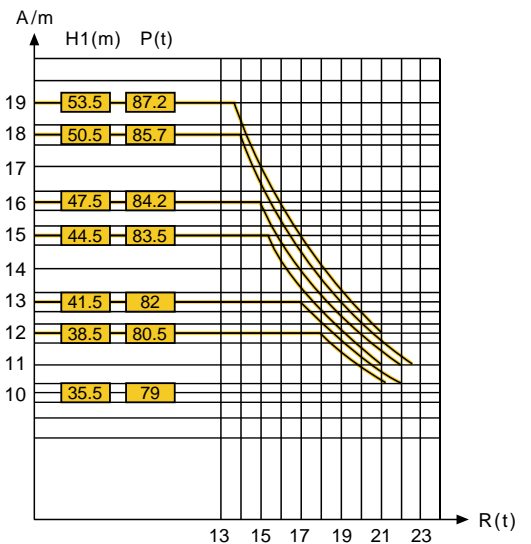
F = Reactions

- In service
- Out of service
- 🏗 Without load and ballast with longest jib and maximum height

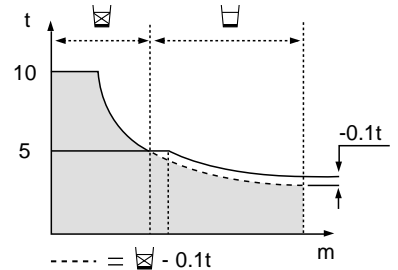
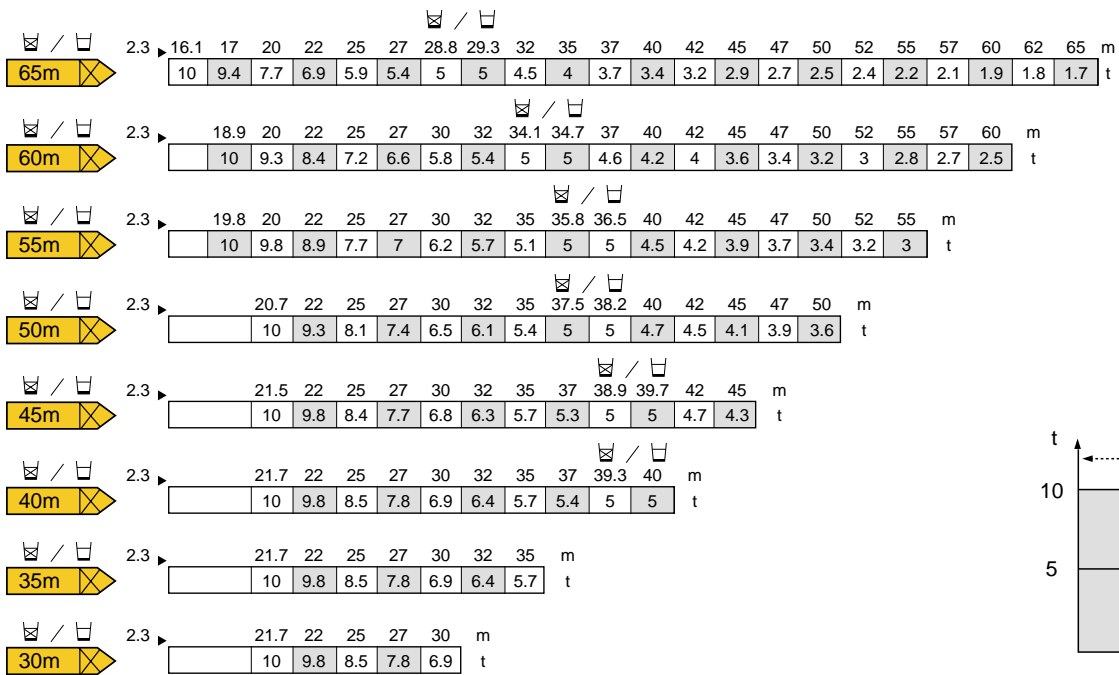
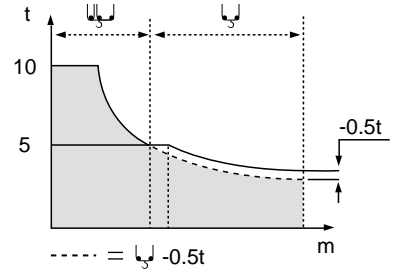
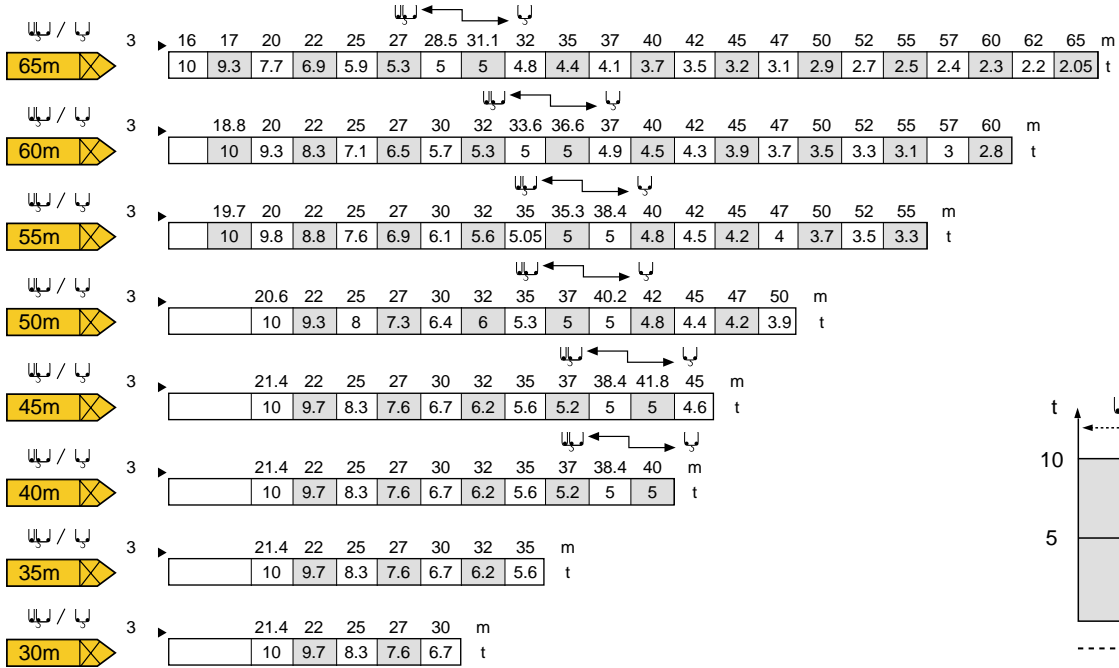
Climbing crane



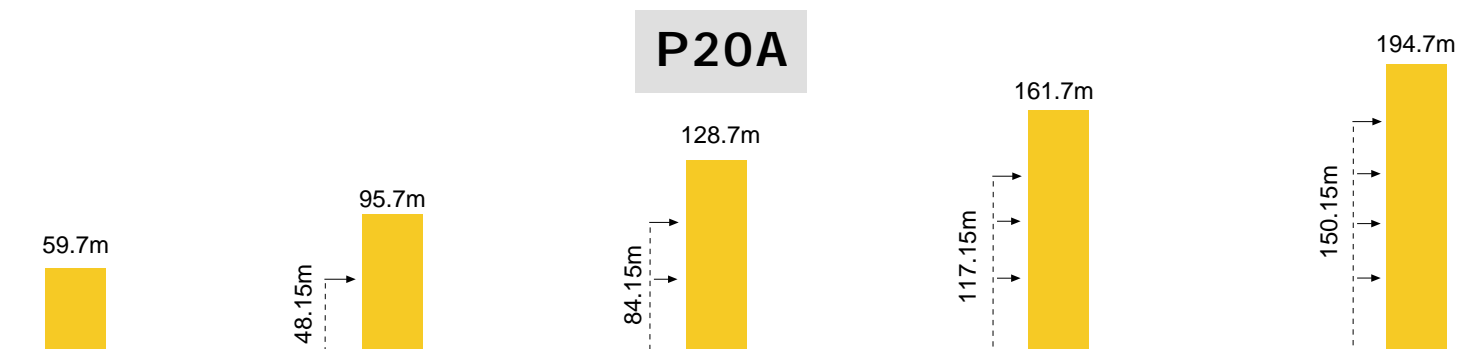
BA 66 A









Load diagrams



Anchorage



Mechanisms

		m/min	t	m/min	t	ch-Ps hp	kW	
Hoisting	 50 LVF 25	↓ ↑		↓ ↑		50	37	557m
		4 ↓ 10 ↓ 32.6 ↓ 44 ↓ 65 ↓ 79	5 5 5 3.75 2.5 1.25	2 ↓ 5 ↓ 16.3 ↓ 22 ↓ 32.5 ↓ 39.5	10 10 10 7.5 5 2.5			
Trolleying	 6 D3 V4	10 - 50 m/min (10t)		100 m/min (5t)		6	4.4	
Slewing	 RCV 185	0 ≥ 0.8 tr/min (rpm)				2 x 9	2 x 6.6	
Travelling	VB 20A  R ≥ 13m RT 544 A1 2V	13.5 - 27				4 x 7	4 x 5.2	
CEI 38 	IEC 38	kVA		Generator set				
400V (+6% – 10%) 50Hz		50 LVF : 75 kVA		*				

* Please consult us.

Subject to Modification. This commercial document is not legally binding. For any technical information, please refer to the corresponding instructions.



GROVE

POTAIN 

Manitowoc Crane Group Asia Pte Ltd
Manitowoc Crane Group

26 Benoi Road
Singapore 629 898
Tel: 65-6861 7133
Fax (Admin/Sales) : 65-6862 4040
Fax (Service/Parts): 65-6862 4142
www.manitowoccrane.com

Copyright. © POTAIN 2004

MC 235B

Ref: 2004.01